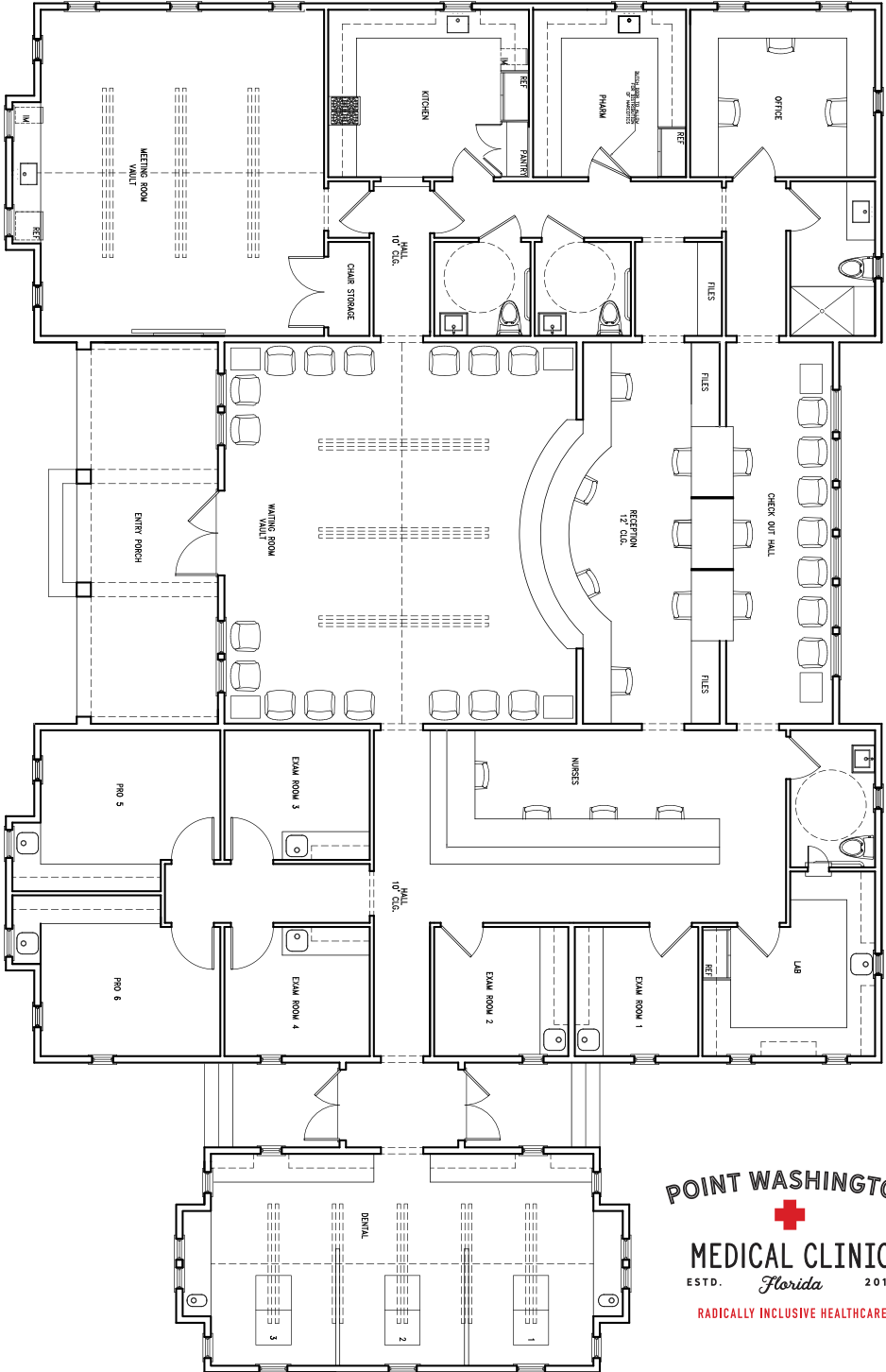






MEDICAL CLINIC **NEW BUILDING PLANS**



**POINT WASHINGTON**  
  
**MEDICAL CLINIC**  
 ESTD. *Florida* 2017  
**RADICALLY INCLUSIVE HEALTHCARE**

*“We need your help.”*

**YOUR SUPPORT WILL GROW OUR FUTURE : OUR BUILDING**

We appreciate your interest in the Point Washington Medical Clinic (PWMC)! The Clinic plays a critical role in Walton County by offering radically inclusive healthcare to all, regardless of means. To date, we have served the community with more than 12,000 office visits and provided over \$2.5 million in healthcare savings. This important work is largely supported by generous donors and grants. The needs have grown tremendously since we opened our doors for one clinic day per week in April 2017 and we have outgrown our current space.

We need your help to make our efforts go even further! To continue our work and expand our offerings, we launched a building campaign. While we have secured significant funding, we still have more to raise to complete the building. A land agreement with Point Washington United Methodist Church is in place and a groundbreaking was held in Summer 2022. Construction is underway with plans in place for a Fall 2023 opening. By making a tax deductible contribution to our campaign, you'll be making a direct impact to our community by ensuring access for all to needed quality healthcare. Additionally you'll be recognized for your generosity as a supporter on our website and in the building's lobby.

Please be assured your contribution will be put to good use providing help to individuals in need of assistance right here in our community. You can make a donation online at [thepwmc.org](http://thepwmc.org) or send a check to PWMC at 1290 N Co Hwy 395, Santa Rosa Beach, FL 32459. Please add “Building Fund” in the note.

Thank you for your consideration!

Hillary Glenn, DNP, APRN  
Executive Director & Co-founder





**FOUNDED** *by*  
**PATSY VARGO, MD**  
*and*  
**HILLARY GLENN, DNP**  
**APRIL 2017**

*Originally clinic was open*  
**1 DAY A WEEK**  
*Currently clinic is open*  
**2 DAYS  
A WEEK**



Operating in the fellowship hall of the  
**POINT WASHINGTON  
UNITED METHODIST CHURCH**

**12,000**  *office visits to date*

**TOTAL VISITS SINCE OPENING  
APRIL 2017. WE EXPANDED DAYS  
OF OPERATION FROM ONE TO TWO  
DAYS IN 2019.**

*our goal*

**KEEP CHILDREN IN SCHOOL, PEOPLE AT WORK  
AND EASE THE BURDEN OF LOCAL ERS**



**PATIENT REPORTED  
ANNUAL INCOME**

**< \$20,000 61%**  
**< \$35,000 84%**



**PATIENT  
GENDER  
AND AGE**

**PATIENT  
MARITAL  
STATUS**

**MARRIED 41%**  
**SINGLE 51%**



**FEMALE 59.1%**  
**MALE 40.9%**

*24% under the age of 18*

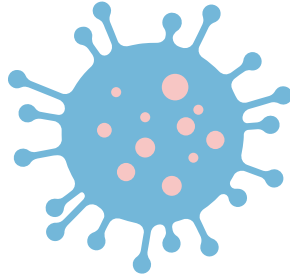
The clinic currently offers a multitude of services for all ages, including immediate and primary care, the treatment of minor injuries, general illnesses and infections, wellness education, school and sports physicals, and the management of chronic conditions such as hypertension, diabetes and high cholesterol.

In 2021 alone we treated

**2,100+**  
*unduplicated  
patients*

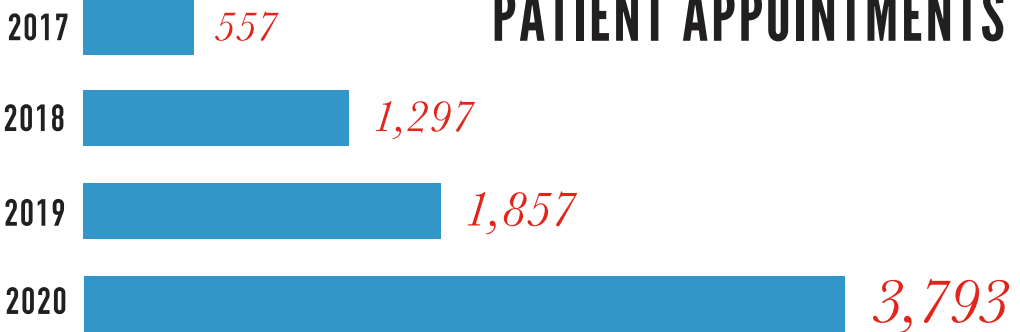
almost **DOUBLING** from 2019

**TESTED 5,000+ COVID-19**



**PATIENTS TO DATE**

## PATIENT APPOINTMENTS



**OUR MISSION** is to build a stronger and healthier community by providing high quality primary health care regardless of the patient's means or access. By being volunteer driven, PWMC's own costs will be maintained at a substantially lower cost per patient than other providers.

**27,500+** *hours*

SINCE 2017, OVER 25K  
VOLUNTEER HOURS HAVE MADE  
THE CONTINUED OPERATION AND  
EXTENDED HOURS POSSIBLE.



**NO FEE** *for*  
**SERVICE**



**\$2.5M+** *worth of care given*

WE HAVE SERVED THE COMMUNITY WITH  
THE EQUIVALENT OF OVER **2.5 MILLION**  
**DOLLARS** IN FREE MEDICAL CARE.

*Based on \$125/office visit, medications given,  
procedures done, and off-site procedures and  
surgeries paid for through the clinic.*

**ANNUAL PROJECTIONS** based on fully staffed and opened medical building – reflects full potential/capacity of the building

**2 to 5 DAYS A WEEK OR**

*300% increase in availability of service hours*

**INCREASE IN SERVICES OFFERED** *to include but not limited to:*



- **DENTAL**
- **PEDIATRIC ROOMS**
- **SPECIALTIES**
- **DISEASE PREVENTION &**
- **HEALTH EDUCATION**

**9,000 +** *patients in practice*



**PROJECTED VALUE OF CARE**

**\$2.4M**

Value of Care **on Office Visits**  
*(based on \$125 urgent care visit)*

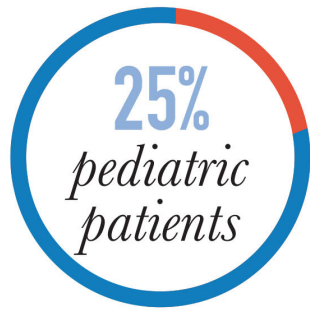
**\$600K**

Value of Care **on Dental**



**TOTAL VALUE OF CARE ANNUALLY:**

**\$3,000,000 +** *in office visits alone*

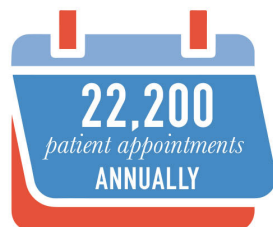


**19,200** Medical Office  
Visits Annually

**3,000 +** Dental Visits

Volunteer Hours Needed:

**12,500 +**



# Help Us Reach Our Goal

## YOUR SUPPORT WILL GROW OUR FUTURE

Since launching our building campaign we have experienced tremendous momentum and celebrated the following milestones:

- Land Agreement Signed - July, 2021
- Development Order Approved - October, 2021
- First \$1M Raised - December, 2021
- Building Permit - April, 2022
- Groundbreaking - May, 2022
- Roof In Place - August, 2022
- Anticipated Opening - Fall 2023

While we've hit these milestones, we have more funds to raise to complete the building. The reality is that the need for our services continues to grow. With that in mind, we have a variety of opportunities to support the PWMC to accommodate every budget.

### WAYS TO GIVE INCLUDE:

- Capital Campaign
- Event Sponsorship
- Circle of 100
- General Donations

### CAPITAL CAMPAIGN

Contribute to making our new stand alone facility a reality by making a one-time or recurring donation in support of construction costs, equipment purchases, technology improvements and more. For questions or to contribute to our capital campaign, contact Hillary Glenn at [hillary@thepwmc.org](mailto:hillary@thepwmc.org).

### EVENT SPONSORSHIP

The PWMC produces several annual events including Harvest Moon, Metamorphosis and others. Event sponsorship provides a wonderful opportunity to support our fundraising efforts and showcase your business as a healthcare hero for our community. To learn more about our upcoming events and sponsorship opportunities, contact Brittany Dykes at [brittany@thepwmc.org](mailto:brittany@thepwmc.org).

### CIRCLE OF 100

Join our Circle of 100 by agreeing to make a minimum donation of \$100 per month. To learn more about the Circle of 100 and set up your donation schedule, visit the Circle of 100 page on our website at [thepwmc.org](http://thepwmc.org).

### GENERAL DONATIONS

We accept donations of all sizes on our website at [thepwmc.org](http://thepwmc.org).

### YOU'RE INVITED

We welcome the opportunity to share our vision in person with you during an on-site tour of the facility. You'll learn more about who we are as an organization and see how we plan to expand our hours, services and capacity. To schedule a visit for yourself or your leadership team, please email Brittany Dykes at [brittany@thepwmc.org](mailto:brittany@thepwmc.org).

We are so grateful for your consideration and interest in improving the health of our community!

For more information, visit [thepwmc.org](http://thepwmc.org).





*Point Washington*  
MEDICAL CLINIC

*Our desire is to be a guiding light for our patients  
on their journey to optimal wellness.*

*Your contribution to this campaign supports a  
strategic local resource working to ensure a healthier  
future for all in Walton County and beyond.*



a 501(c)(3) Charitable Organization

1321 N COUNTY HWY 395  
SANTA ROSA BEACH, FLORIDA 32459  
850.213.1133 [info@thepwmc.org](mailto:info@thepwmc.org)

[THEPWMC.ORG](http://THEPWMC.ORG)